

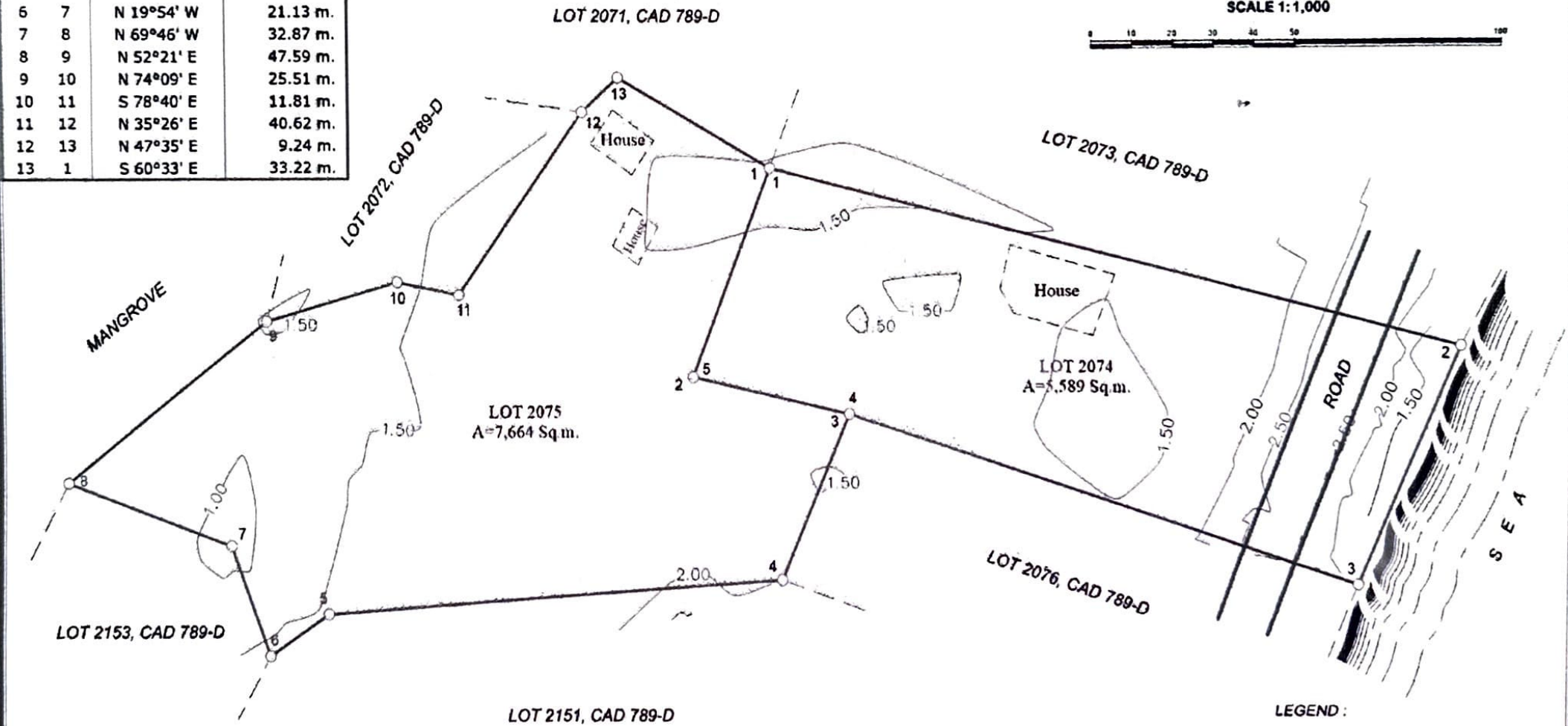
TECHNICAL DESCRIPTIONS

LINE	BEARING	DISTANCE
LOT 2075 A=7,664 Sq.m.		
1	S 21°15' W	40.74 m.
2	S 77°20' E	30.60 m.
3	S 23°17' W	32.73 m.
4	S 86°10' W	86.30 m.
5	S 56°09' W	13.39 m.
6	N 19°54' W	21.13 m.
7	N 69°46' W	32.87 m.
8	N 52°21' E	47.59 m.
9	N 74°09' E	25.51 m.
10	S 78°40' E	11.81 m.
11	N 35°26' E	40.62 m.
12	N 47°35' E	9.24 m.
13	S 60°33' E	33.22 m.

LOT 2074 A=5,589 Sq.m.			
1	2	S 76°11' E	133.09 m.
2	3	S 23°41' W	46.82 m.
3	4	N 72°33' W	99.93 m.
4	5	N 77°20' W	30.60 m.
5	1	N 21°15' E	40.74 m.



PPCS-TM/PRS-92 ZONE NO: V
BEARINGS : GRID
SCALE 1:1,000



LEGEND :

	BLDG.
	CONTOUR LINES
	BOUNDARY LINES

SURVEYED BY
EMELIANO F. CABREDAS, JR.
GEODETIC ENGINEER
PRC LIC NO 8601 DATE 10-14-2010

OWNER / LOCATION
BARANGAY MALINAO
PROVINCE OF SURIGAO DEL NORTE
MUNICIPALITY OF GENERAL LUNA

TOPOGRAPHIC PLAN

SHEET CONTENT SCALE

1
1